

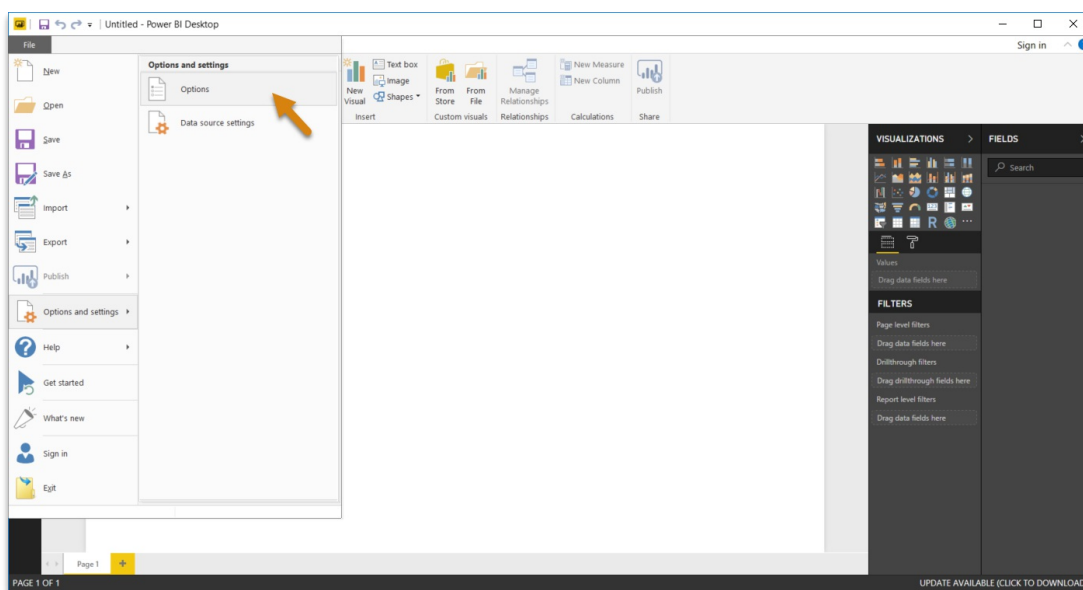
DevResults to Power BI

Last Modified on 04/20/2020 5:53 pm EDT

You can now import DevResults results data directly to Power BI using our custom connector.

Installing the DevResults Custom Connector

As the DevResults to Power BI custom connector is still in beta, please allow all extensions to load without validation or warning. To do so, click on **Options and settings** in the Power BI **File** menu and select **Options**.




Navigate to **Security** and select "(Not Recommended) Allow any extension to load without validation or warning" under **Data Extensions**. Then click **OK**.

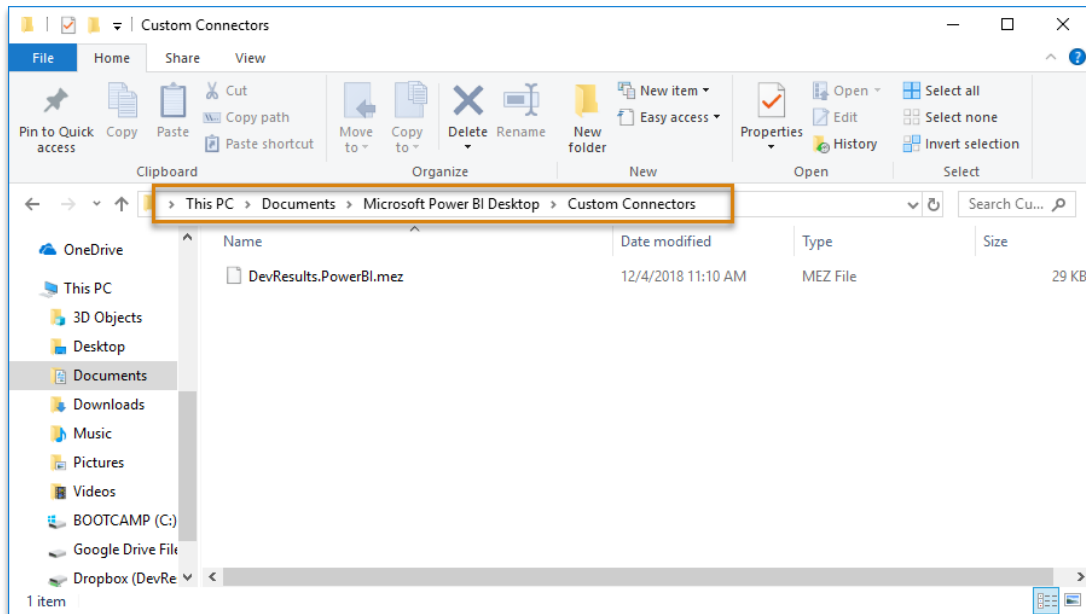
If this option is not available to you, please update Power BI with the latest version.

Close Power BI. You don't need to save your changes.

You can now navigate to your **Documents** folder and create a new folder called "Microsoft Power BI Desktop". Within this folder, create another folder called "Custom Connectors" and save the following file there:

DevResults.PowerBI.mez 

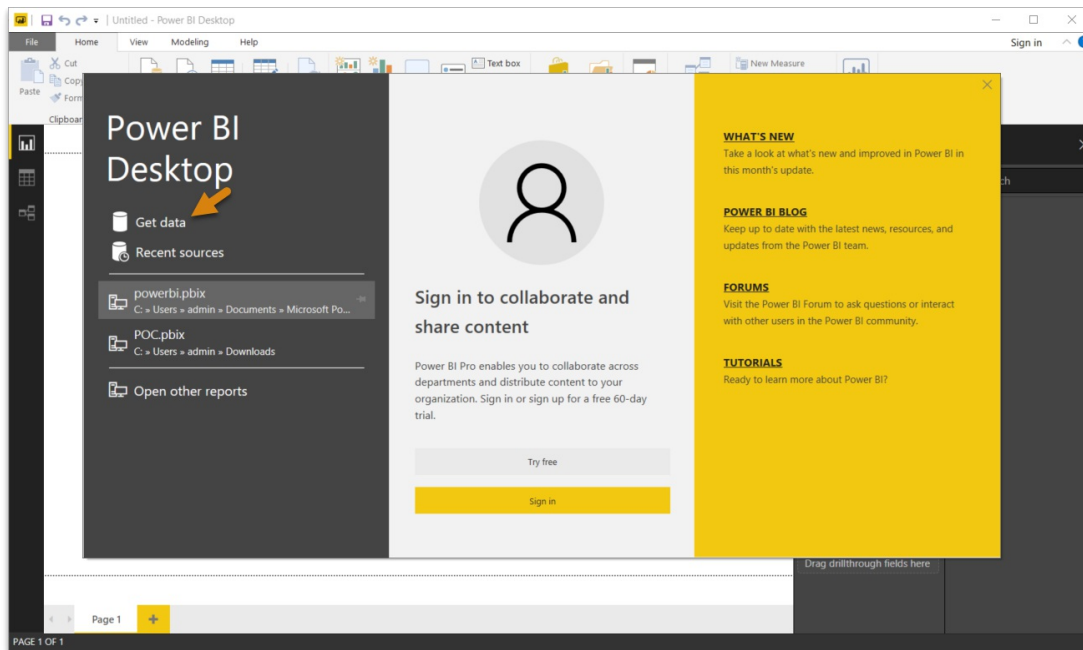
The file path should look like this. Please note the spelling, spaces, and capitalization:



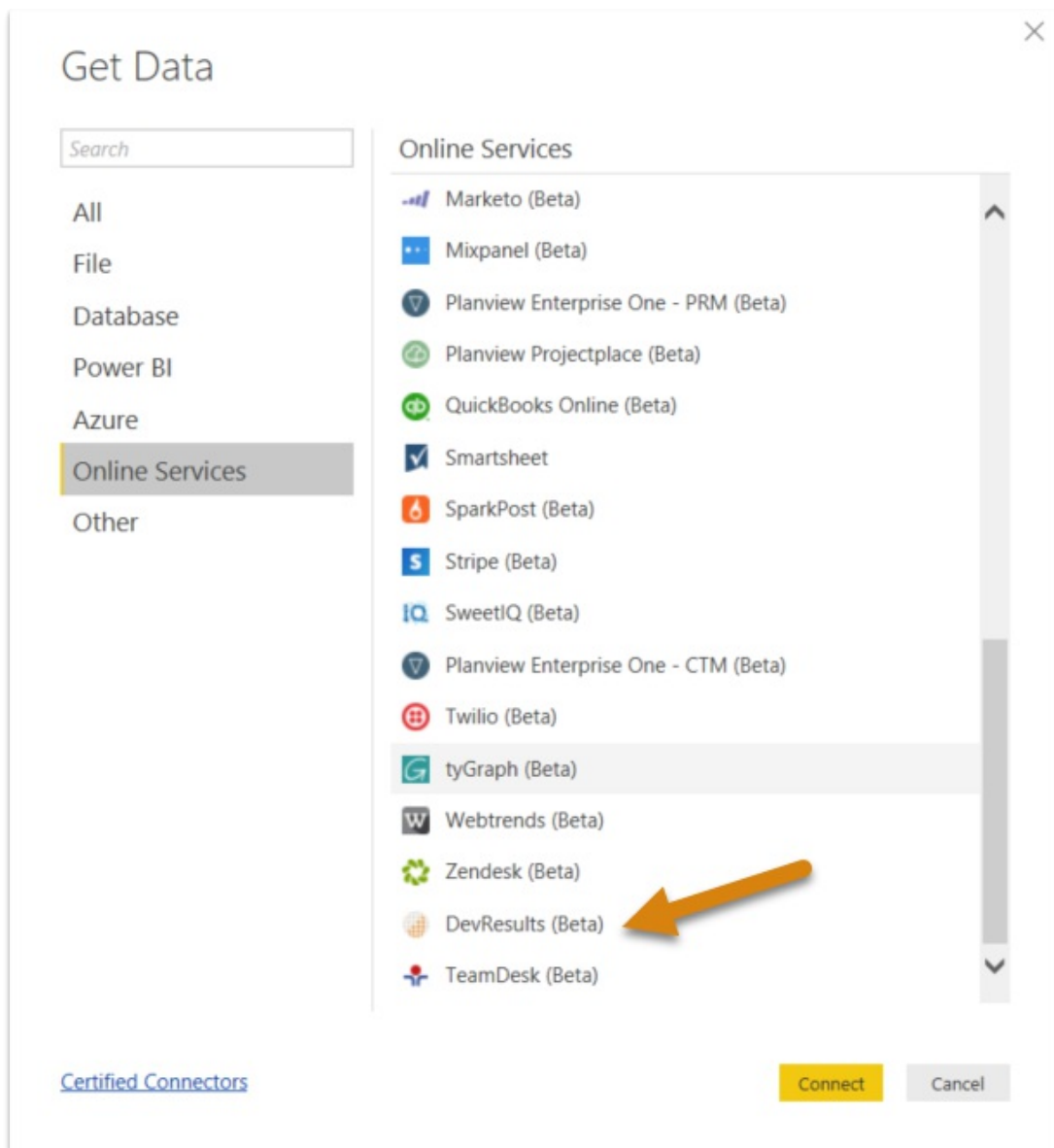
You can now reopen Power BI Desktop.

Load Data

Click on Get data in the Power BI welcome menu, or select the option on the **Home** ribbon.



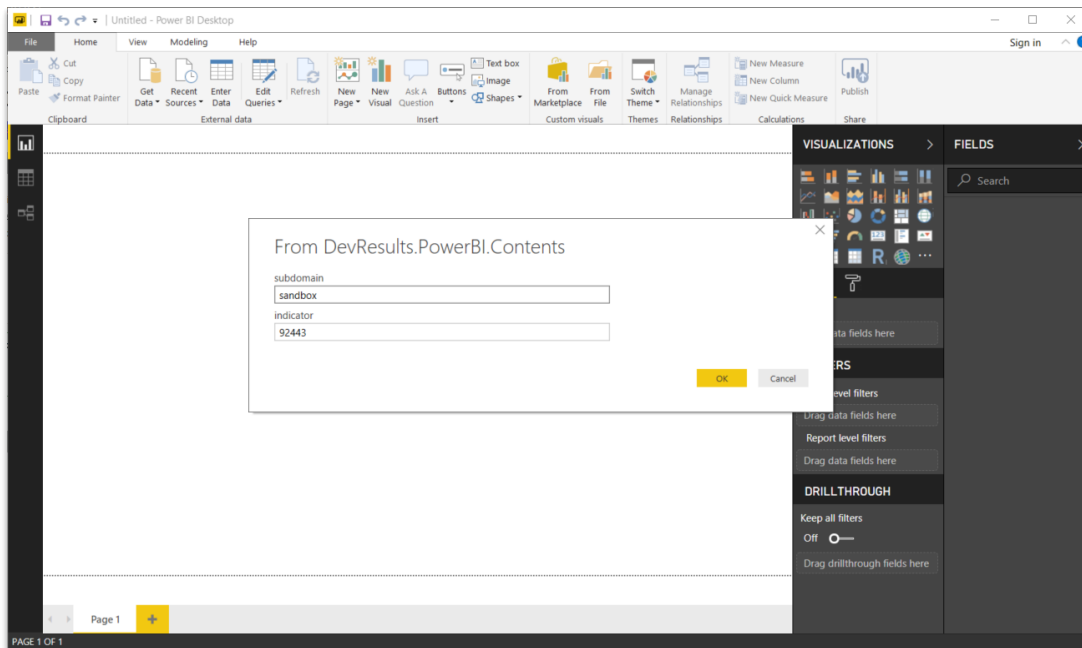
Navigate to **Online Services** and scroll till you see **DevResults (Beta)**. You can also search for DevResults in the search bar at the top of the menu.



Click **Connect** to load data.

If you're unable to see the DevResults connector, double-check the name of the folder that the .MEZ file is saved in and make sure you only have one "Power BI Desktop" folder in your **Documents** folder.

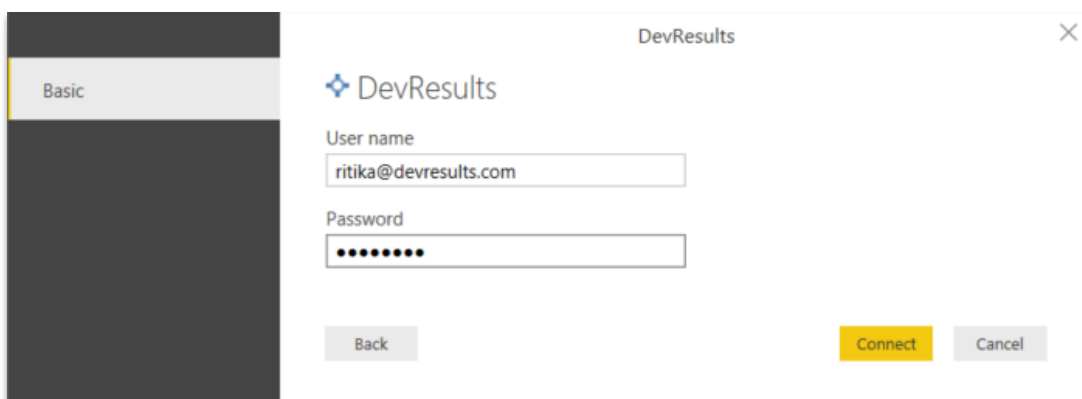
You can now specify the subdomain you would like to pull data from, as well as the Indicator ID:



To find the Indicator ID, navigate to the Indicator Overview tab. The ID is at the end of the URL:

<https://sandbox.devresults.com/en/rf/indicators/indicator/92443>

You will then be prompted to enter your DevResults username and password:



Once you click **Connect**, you will be taken to a data preview page:

sandbox: 92443

result	effectiveDate	reportingPeriod.id	reportingPeriod.title	activity.id	activity.title	adminDivision.id	adminDivision.tit
0	9/30/2012	14120	FY 2012	44757	Capable Local Governance	210447	Lago Niassa 1
1	9/30/2013	14125	FY 2013	44757	Capable Local Governance	210373	Balama
0.75	9/30/2013	14125	FY 2013	44757	Capable Local Governance	210374	Chiùre
0.166666667	9/30/2013	14125	FY 2013	44757	Capable Local Governance	210398	Funhalouiro
1	9/30/2014	14130	FY 2014	44757	Capable Local Governance	210374	Chiùre
0	9/30/2014	14130	FY 2014	44757	Capable Local Governance	210447	Lago Niassa 1
0.25	9/30/2014	14130	FY 2014	44757	Capable Local Governance	210450	Lichinga
0.090909091	9/30/2015	14135	FY 2015	44757	Capable Local Governance	210449	Lago
0.5	9/30/2016	14140	FY 2016	44757	Capable Local Governance	210398	Funhalouiro
0	9/30/2016	14140	FY 2016	44757	Capable Local Governance	210449	Lago
0	9/30/2016	14140	FY 2016	44757	Capable Local Governance	210447	Lago Niassa 1
0.25	9/30/2018	14150	FY 2018	44757	Capable Local Governance	210398	Funhalouiro
1	9/30/2018	14150	FY 2018	44757	Capable Local Governance	210401	Inharrime
0.444444444	9/30/2012	14120	FY 2012	44757	Capable Local Governance	210446	Cuamba
0	9/30/2012	14120	FY 2012	44757	Capable Local Governance	210447	Lago Niassa 1
0.555555556	9/30/2012	14120	FY 2012	44757	Capable Local Governance	210450	Lichinga
1	9/30/2013	14125	FY 2013	44757	Capable Local Governance	210374	Chiùre
1	9/30/2013	14125	FY 2013	44757	Capable Local Governance	210447	Lago Niassa 1
0	9/30/2012	14120	FY 2012	44757	Capable Local Governance	210398	Funhalouiro
0.666666667	9/30/2012	14120	FY 2012	44757	Capable Local Governance	210446	Cuamba

The data in the preview has been truncated due to size limits.

Load Edit Cancel

You can either click **Load** to begin working with the data, or edit the column names, etc. by clicking **Edit**.

NOTE: PowerBI does not automatically recognize data types like DevResults does. You will have to ensure your indicator results are set to the correct data type. You can do so by selecting **Detect Data Type** under the "Transform" menu in the Power Query tool.

Untitled - Power Query Editor

File Home Transform Add Column View Help

Group By Use First Row as Headers Count Rows

Transpose Reverse Rows

Data Type: Any Detect Data Type Rename

Replace Values Fill Pivot Column Convert to List

Unpivot Columns Move

Split Column Format

Queries [1]

Query1

= DevResults.PowerBI.Contents("leslie", 62018)

ABC 123	result	effectiveDate	ABC 123	reportingPeriod.id
1	3375	12/31/2018		5531
2	300	12/31/2018		5531
3	322	12/31/2018		5531
4	201	3/31/2019		5532
5	3724	3/31/2019		5532
6	8550	6/30/2019		5533
7	148	6/30/2019		5533
8	854	6/30/2019		5533

Once you load the data, you can begin using it in Power BI.

The screenshot displays a Power BI report interface. On the left, a data table is visible with the following columns: activity.title, incumbent v Non.title, and result. The table contains 25 rows of data, with values ranging from 0 to 1. On the right, the 'FIELDS' pane is open, showing a list of fields under 'Query1'. The fields listed are: activity.id, activity.title, adminDivision..., adminDivision..., effectiveDate, incumbent v ..., incumbent v ..., reportingPerio..., reportingPerio..., and result. The 'incumbent v ...' field is highlighted. Below the fields pane, the 'FILTERS' section is visible, showing filters for 'activity.title is (All)', 'incumbent v Non.title is (All)', and 'result is (All)'. The 'Visualizations' pane is also visible on the left side of the interface, showing various chart and table icons.

activity.title	incumbent v Non.title	result
Capable Local Governance	Incumbent Did Not Run	0
Capable Local Governance	Incumbent Did Not Run	0.0833333333
Capable Local Governance	Incumbent Did Not Run	0.090909091
Capable Local Governance	Incumbent Did Not Run	0.166666667
Capable Local Governance	Incumbent Did Not Run	0.25
Capable Local Governance	Incumbent Did Not Run	0.3
Capable Local Governance	Incumbent Did Not Run	0.333333333
Capable Local Governance	Incumbent Did Not Run	0.454545455
Capable Local Governance	Incumbent Did Not Run	0.5
Capable Local Governance	Incumbent Did Not Run	0.571428571
Capable Local Governance	Incumbent Did Not Run	0.6
Capable Local Governance	Incumbent Did Not Run	0.666666667
Capable Local Governance	Incumbent Did Not Run	0.75
Capable Local Governance	Incumbent Did Not Run	0.769230769
Capable Local Governance	Incumbent Did Not Run	0.8
Capable Local Governance	Incumbent Did Not Run	0.818181818
Capable Local Governance	Incumbent Did Not Run	0.833333333
Capable Local Governance	Incumbent Did Not Run	1
Capable Local Governance	Incumbent Ran	0
Capable Local Governance	Incumbent Ran	0.066666667
Capable Local Governance	Incumbent Ran	0.111111111
Capable Local Governance	Incumbent Ran	0.142857143
Capable Local Governance	Incumbent Ran	0.166666667
Capable Local Governance	Incumbent Ran	0.2
Capable Local Governance	Incumbent Ran	0.25
Capable Local Governance	Incumbent Ran	0.285714286
Capable Local Governance	Incumbent Ran	0.333333333
Capable Local Governance	Incumbent Ran	0.4
Capable Local Governance	Incumbent Ran	0.444444444
Capable Local Governance	Incumbent Ran	0.5

Note: To load data from multiple indicators in a single report, click on **Get Data** and add a new subdomain and Indicator ID. In most cases, your DevResults login details do not need to be entered again.

Didn't answer your question? Please email us at help@devresults.com.

Related Articles